

RAINBOW LAKES - TRACT "B" - PHASE ONE

(A P.U.D.)

316-009

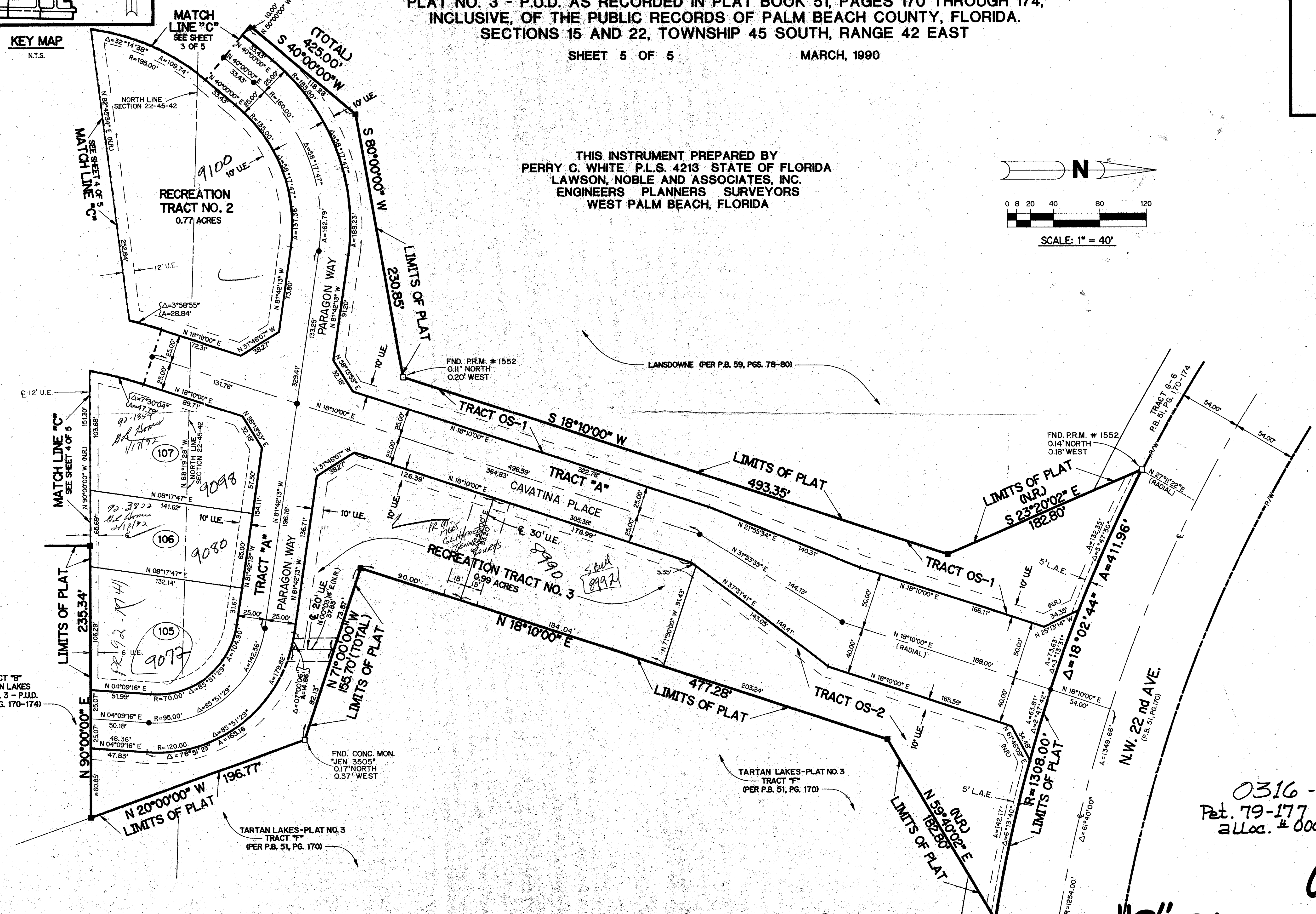
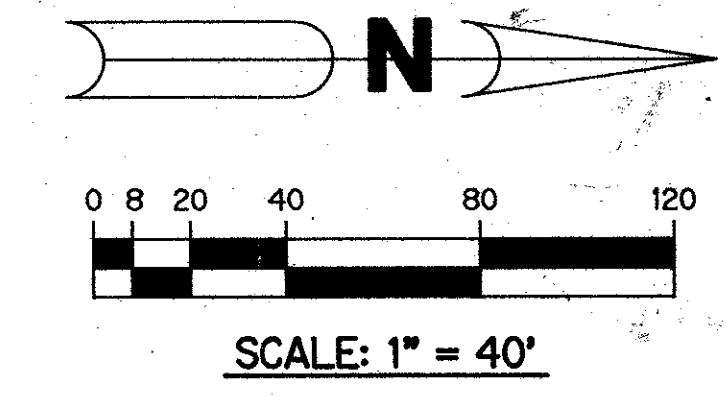
176

A REPLAT OF A PORTION OF TRACT "B" ACCORDING TO THE PLAT OF TARTAN LAKES PLAT NO. 3 - P.U.D. AS RECORDED IN PLAT BOOK 51, PAGES 170 THROUGH 174, INCLUSIVE, OF THE PUBLIC RECORDS OF PALM BEACH COUNTY, FLORIDA. SECTIONS 15 AND 22, TOWNSHIP 45 SOUTH, RANGE 42 EAST

SHEET 5 OF 5

MARCH, 1990

THIS INSTRUMENT PREPARED BY
 PERRY C. WHITE P.L.S. 4213 STATE OF FLORIDA
 LAWSON, NOBLE AND ASSOCIATES, INC.
 ENGINEERS PLANNERS SURVEYORS
 WEST PALM BEACH, FLORIDA



TAL 441

PHASE ONE
 PAGE 176
 FLOOD ZONE B
 QUAD # 24-35
 SE 19-17
 PUD NAME SCUM
 15-22-45-42

0316-009
 Pet. 79-177
 Alloc. # 0001

67/176

RAINBOW LAKES - TRACT "B" - PHASE ONE SHEET 5 OF 5